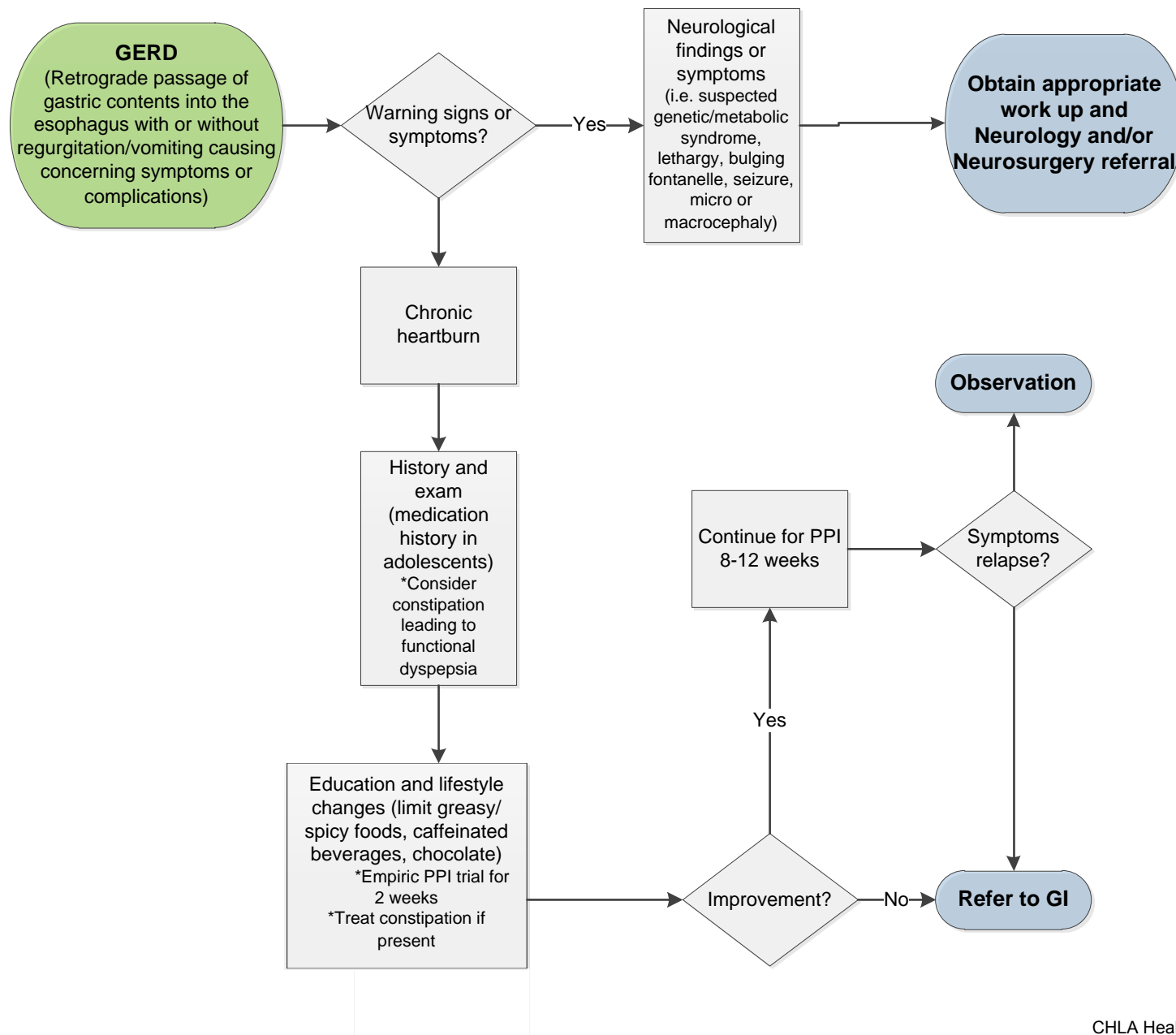


GERD in Non-Infants



GI Warning Signs and Symptoms

- Bilious vomiting
- Hematemesis
- Hematochezia
- Forceful or projectile vomiting
- Onset of vomiting after 6 months of life
- Failure to thrive
- Diarrhea
- Constipation
- Hepatosplenomegaly
- Abdominal tenderness or distension